

Gas Cock

CB73F



CB75F



CA15



CT15



High-Pressure Rubber Hose

LSH6-H

LSH10-H



FUJI KOKI CO.,LTD.

NAGOYA JAPAN

9-11, 2-chome, Shinsakae, Naka-ku, Nagoya, Japan
Phone +81-52-261-3251 Fax +81-52-261-3255
e-mail : t.kamioka@fujikoh-grp.co.jp
web : <http://www.fujikoh-grp.co.jp>

Established in 1947
ISO9001

SAFETY

&

HIGH QUALITY

LPG EQUIPMENTS



FUJI KOKI CO.,LTD.

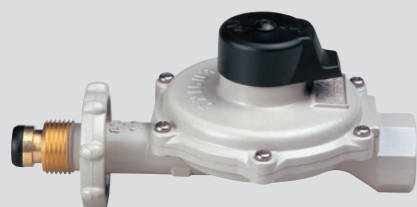
NAGOYA JAPAN

FUJIKOH CATALOGUE



Single-Stage Regulator

■ RSA5-NH



■ RA33 · 50 · 70



■ RA120 · 200

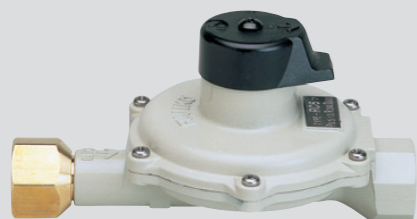


■ Single-Stage Regulator

Model	RSA5-NH	RA33	RA50	RA70	RA120	RA200
Capacity	5kg/hr	33kg/hr	50kg/hr	70kg/hr	120kg/hr	200kg/hr
Inlet Pressure	0.07~1.56MPa					
Outlet Pressure	2.8±0.5kPa					
Rock up Pressure	under 3.5kPa					
Inlet Connection	POL Male Handwheel	Rc 1/2	3/4B High Pressure Union		40A High Pressure Frange	
Outlet Connection	Rc 1/2	1B Union	1 1/4B Union		2B Union	
Face to Face Dimension	160mm	259±5mm	365±5mm		425±5mm	490±5mm

Second-Stage Regulator

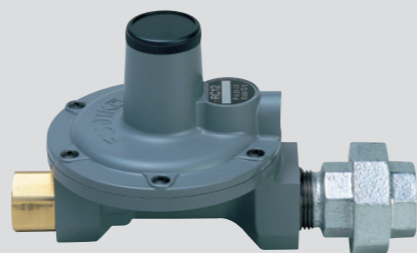
■ RC6



■ SG6 · SG6N



■ RC12



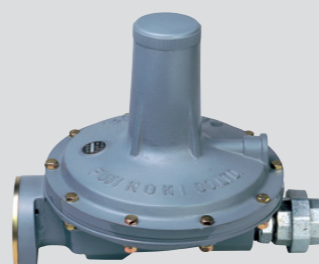
■ RC33



■ RC50 · 70



■ RC120 · 200



■ Second-Stage Regulator

Model	RC6	SG6	SG6N	RC12	RC33	RC50	RC70	RC120	RC200
Capacity	6.5kg/hr	6kg/hr	5.5m³/hr	12kg/hr	33kg/hr	50kg/hr	70kg/hr	120kg/hr	200kg/hr
Inlet Pressure	0.025~0.1MPa	0.025~0.3MPa		0.025~0.1MPa					
Outlet Pressure	2.8±0.5kPa	2.96±15%kPa	2.16±15%kPa	2.8±0.5kPa					
Rock up Pressure	under 3.7kPa			under 3.5kPa					
Inlet Connection	Rc 1/2	R 1/2		Rc 1/2		3/4B High Pressure Union		40A High Pressure Frange	
Outlet Connection	Rc 1/2			1B Union		1 1/4B Union		2B Union	
Face to Face Dimension	146mm	150mm		198±5mm	259±5mm	365±5mm		425±5mm	490±5mm

Variable Type First-Stage Regulator

■ RD5



■ RD33 · 70



■ Variable Type First-Stage Regulator

Model	RD5	RD33	RD70
Capacity	5kg/hr	33kg/hr	70kg/hr
Inlet Pressure	0.10~1.56MPa		
Outlet Pressure	0.00~0.15MPa		
Inlet Connection	POL Male Handwheel	15A High Pressure Frange	20A High Pressure Frange
Outlet Connection	Rc 1/2	15A High Pressure Frange	20A High Pressure Frange
Face to Face Dimension	145mm	215±5mm	300±5mm

Integrated Type Automatic Change-Over Regulator

■ RH8B



■ RF15F · 33



■ Integrated Type Automatic Change-Over Regulator

Model	RH8B	RF15F	RF33
Capacity	8kg/hr	15kg/hr	33kg/hr
Inlet Pressure	0.15~1.56MPa	0.10~1.56MPa	
Outlet Pressure	2.55~3.30kPa		
Rock up Pressure	under 3.5kPa		
Inlet Connection	Rc 1/4	15A High Pressure Frange	
Outlet Connection	1/2B Union	3/4B Union	1B Union

Separate Type Automatic Change-Over Regulator

■ RE22 · 33 · 50



■ Separate Type Automatic Change-Over Regulator

Model	RE22	RE33	RE50
Capacity	20kg/hr	33kg/hr	50kg/hr
Inlet Pressure	0.10~1.56MPa		
Outlet Pressure	0.032~0.083MPa		
Rock up Pressure	under 0.095MPa		
Inlet Connection	15A High Pressure Frange		
Outlet Connection	Rc 1/2	R 3/4	
Face to Face Dimension	188±5mm		330±5mm

Third-Stage Regulator

■ 45CM

■ 65CM

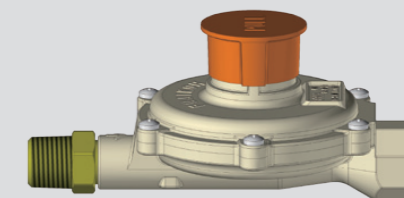


■ Third-Stage Regulator

Model	45CM	65CM
Capacity	2kg/hr	4kg/hr
Inlet Pressure	1~2.5psi	
Outlet Pressure	9~13inch	
Inlet Connection	Rc 1/2	
Outlet Connection	Rc 1/2	
Face to Face Dimension	146mm	

High/Low Pressure Shut-Off Regulator

■ SG6NX



■ High/Low Pressure Shut-off Regulator

Model	SG6NX
Capacity	5.5m³/hr
Inlet Pressure	0.02~0.20MPa
Outlet Pressure	2.16±15%kPa
Rock up Pressure	under 2.6kPa
Inlet Connection	R 1/2
Outlet Connection	Rc 1/2
Face to Face Dimension	150mm